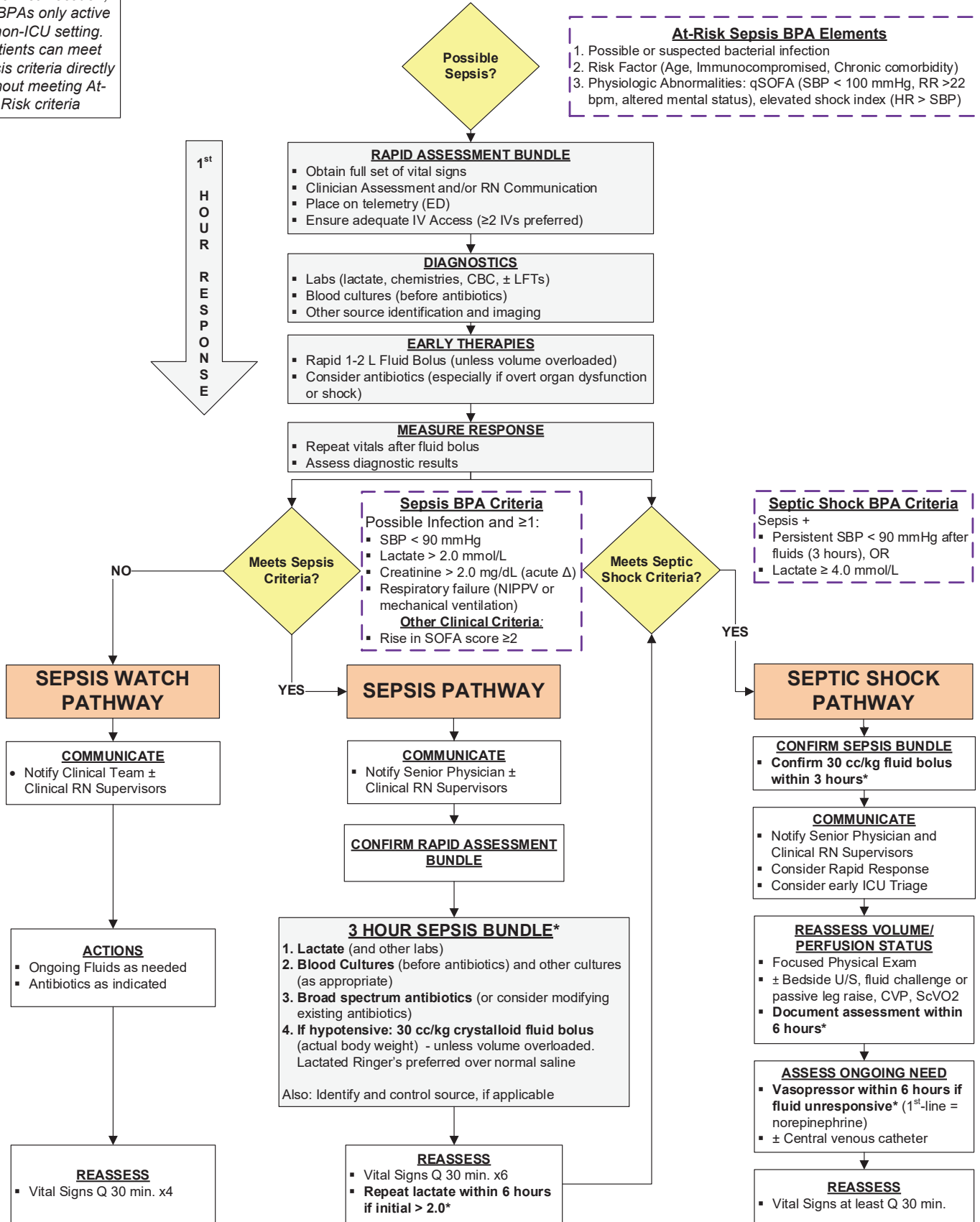


PARTNERS SEPSIS PATHWAY

Note:
Activation of Sepsis Pathway can occur in any clinical location, but BPAs only active in non-ICU setting. Patients can meet Sepsis criteria directly without meeting At-Risk criteria

At-Risk Sepsis BPA Elements

1. Possible or suspected bacterial infection
2. Risk Factor (Age, Immunocompromised, Chronic comorbidity)
3. Physiologic Abnormalities: qSOFA (SBP < 100 mmHg, RR > 22 bpm, altered mental status), elevated shock index (HR > SBP)



* CMS Requirement (SEP-1 Measure)